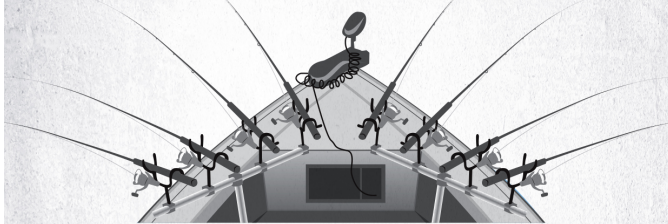


THE ROOKIE'S GUIDE TO SPIDER RIGGING

TROLLING CREEK CHANNELS, OPEN WATER WITH STUMPS OR IN CREEKS WITH ROCKS AND BRUSHY COVER, THERE'S NOTHING MORE FUN THAN CATCHING A BOATLOAD OF BIG CRAPPIE WITH A SPIDER RIG. JUST BE SURE AND CHECK LOCAL REGS TO SEE HOW MANY RODS YOU CAN FISH AT ONCE.



SPIDER RIGGING WIDE COVERAGE AREA



USE A FOOT-CONTROLLED TROLLING MOTOR AND 10' TO 18' RODS, THESE ALLOW CLEARANCE FOR MANEUVERING AND KEEPS LINES FROM GETTING TANGLED.



ROD HOLDERS THAT ALLOW THE ROD HANDLE TO BE TUCKED IN FOR QUICK AND EASY REMOVAL ARE BEST, SET THEM UP ON THE GUNWALE OR A T-BAR.



FOR ANCHORED OR DRIFTING PRESENTATIONS A SIDE-BY-SIDE CONFIGURATION CAN BE USED.

TERMINAL TACKLE

TANDEM RIG

EGG WEIGHT

LIGHTER LEAD LINE TO EASILY BREAK OFF SNAGS

JIG TIPPED WITH MINNOW

