

## Care and Lubrication

Your Browning® reel is designed to provide years of dependable service—but as with any other precision machine, periodic cleaning and maintenance are required for continued peak performance.

Reels made today require periodic lubrication. Oil and grease should be used sparingly; too much can have a negative impact on reel performance. There are lightweight oils and greases made specifically for fishing reels.

Oil should be applied to all bearings, the worm gear and the crankshaft. Grease should be applied to the drive gears, crank gears, the pinion gear and all bushings.

We do not recommend using any multipurpose oil. Many of these oils have properties that will attract dirt and dust to the internal parts. This may cause excessive wear and reduce the life of the reel.

After each trip the reel should be checked for dirt or sand. If it has been exposed to saltwater, the spool should be removed and the entire reel rinsed with water. Dry with a cloth and lubricate the reel as described above.

For professional cleaning and maintenance send reels postage prepaid to:

Outdoor World Rod & Reel Repair  
2300 E. Turner, Suite M  
Springfield, MO 65803  
Phone (417) 873-5274 Fax (417) 873-5280

Browning Trademarks Licensed from Browning.

## One-Year Limited Warranty

Browning Fishing will repair or replace (at our discretion) any Browning® reel which proves to be defective in workmanship or materials within one year from the original date of purchase. You must save your dated sales receipt for warranty validation. This warranty gives you specific legal rights, and you may have other rights which vary from state to state or province to province.

► For reels purchased through our catalogs or basspro.com:

For reel replacement only: Return your reel postage prepaid to the Return Center address listed on your receipt along with a copy of your dated sales receipt.

For reel repair only: Return your reel postage prepaid with a copy of your dated sales receipt and warranty validation to the Outdoor World Rod & Reel Repair address listed to the left.

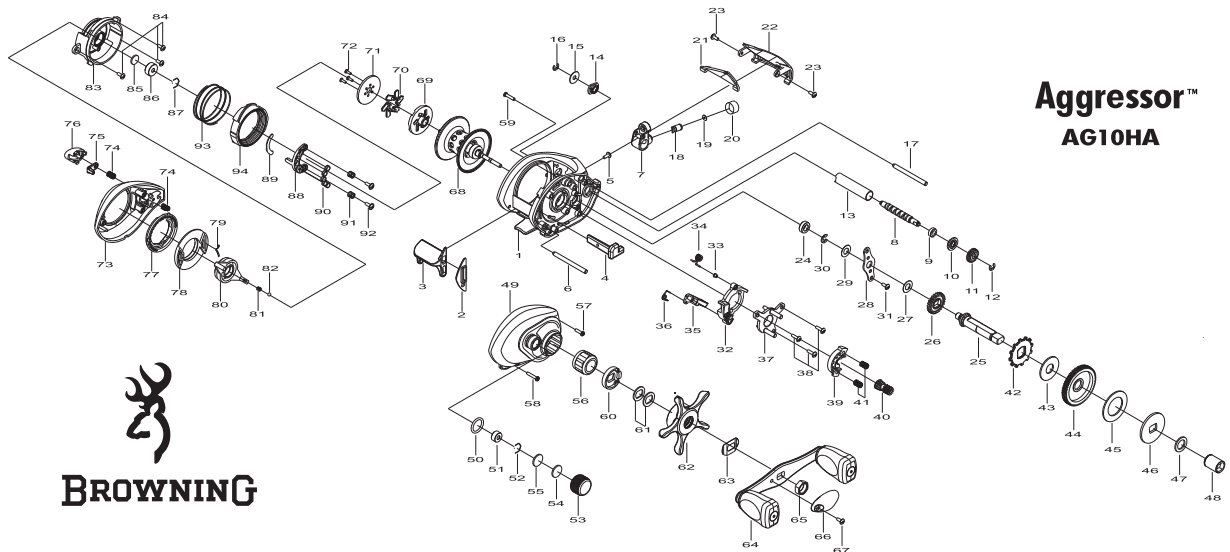
► For reels purchased through Outdoor World®/Sportsman's Warehouse®/World Wide Sportsman™ retail locations:

For reel replacement only: Return your reel (postage prepaid if sending by mail) to the store from which it was purchased along with a copy of your dated sales receipt.

For reel repairs only: Return your reel postage prepaid with a copy of your dated sales receipt and warranty validation to the Outdoor World Rod & Reel Repair address listed to the left.

This warranty does not cover parts, malfunctions or damages due to abuse, accidents, normal wear, or cleaning and re-lubrication required due to the owner's failure to provide reasonable and necessary maintenance. Repairs needed due to abnormal use or modification, or outside the one-year warranty period are available for a reasonable charge from Outdoor World Rod & Reel Repair, providing the reel is returned postage prepaid.

Except to the extent prohibited by applicable law, there are no warranties or conditions, express or implied, other than those expressly set out herein. Browning® Fishing shall not, under any circumstances, be liable for an amount greater than the actual purchase price of the product nor for any special, incidental or consequential damages suffered or incurred in connection with the product and Browning® Fishing does not assume, and does not authorize any person to assume for it, any obligation or liability other than those expressly set out herein.



**Aggressor™**  
**AG10HA**

1	FRAME	16	E-RING	31	BEARING PLATE SCREW	46	DRAG WASHER (D)	61	SPRING WASHER (*2)	76	PUSH BUTTON ASSEMBLY	91	MAGNET HOLDER SPRING (*2)
2	CLUTCH BAR PLATE	17	PILLAR	32	CLUTCH CAM	47	SLEEVE WASHER (OPTIONAL)	62	STAR DRAG ASSEMBLY	77	MAGNET CONTROL DIAL	92	MAGNET HOLDER SCREW (*2)
3	CLUTCH BAR	18	LINE GUIDE PAWL	33	CLUTCH SPRING BUSHING	48	SLEEVE	63	LEAF SPRING	78	DECORATOR	93	BRAKE RING HOLDER SPRING
4	CLUTCH LINK	19	SPACER (OPTIONAL)	34	CLUTCH SPRING	49	GEAR SIDE COVER	64	HANDLE ASSEMBLY (INCL. 4BB)	79	CLICK LEAF SPRING	94	BRAKE RING HOLDER ASSEMBLY
5	CLUTCH BAR SCREW	20	PAWL CAP	35	RETURN PAWL	50	O-RING	65	HANDLE NUT	80	CENTRIFUGAL CONTROL KNOB		
6	CLUTCH BAR SUPPORT	21	LEVEL WIND COVER	36	RETURN PAWL SPRING	51	BALL BEARING	66	HANDLE NUT CAP	81	CLICK BALL SPRING		
7	LINE GUIDE ASSEMBLY	22	FRONT COVER	37	CAM PLATE	52	BEARING RETAINER	67	HANDLE NUT CAP SCREW	82	CLICK BALL		
8	WORM SHAFT	23	FRONT COVER SCREW (*2)	38	CAM PLATE SCREW (*3)	53	CAST CONTROL CAP	68	SPOOL ASSEMBLY (INCL. 1BB)	83	SPOOL COVER		
9	BALL BEARING	24	BALL BEARING	39	PINION YOKE	54	TENSION WASHER	69	BRAKE SHOE HOLDER	84	SPOOL COVER SCREW(*3)		
10	WORM SHAFT BUSHING (A)	25	CRANKSHAFT	40	PINION GEAR	55	SPOOL SPACER (A)	70	BRAKE SHOE (*6)	85	SPOOL SPACER (B)		
11	WORM PINION	26	CRANKSHAFT GEAR	41	PINION YOKE SPRING (*2)	56	ONE WAY CLUTCH	71	BRAKE PLATE	86	BALL BEARING		
12	E-RING	27	GEAR WASHER (A)	42	RATCHET	57	GEAR SIDE COVER SCREW (A)	72	BRAKE PLATE SCREW (*3)	87	BEARING RETAINER		
13	LINE GUIDE PIPE	28	BEARING PLATE	43	RATCHET WASHER	58	GEAR SIDE COVER SCREW (B)	73	PALMING SIDE COVER	88	MAGNET HOLDER		
14	WORM SHAFT BUSHING (B)	29	GEAR WASHER (B)(OPTIONAL)	44	DRIVE GEAR	59	GEAR SIDE COVER SCREW (C)	74	LOCKING PIN SPRING (*2)	89	MAGNET PLATE		
15	WORM SHAFT WASHER (OPTIONAL)	30	E-RING	45	DRAG WASHER (B)	60	CLICK PLATE ASSEMBLY	75	LOCKING PIN	90	MAGNET (*5)		